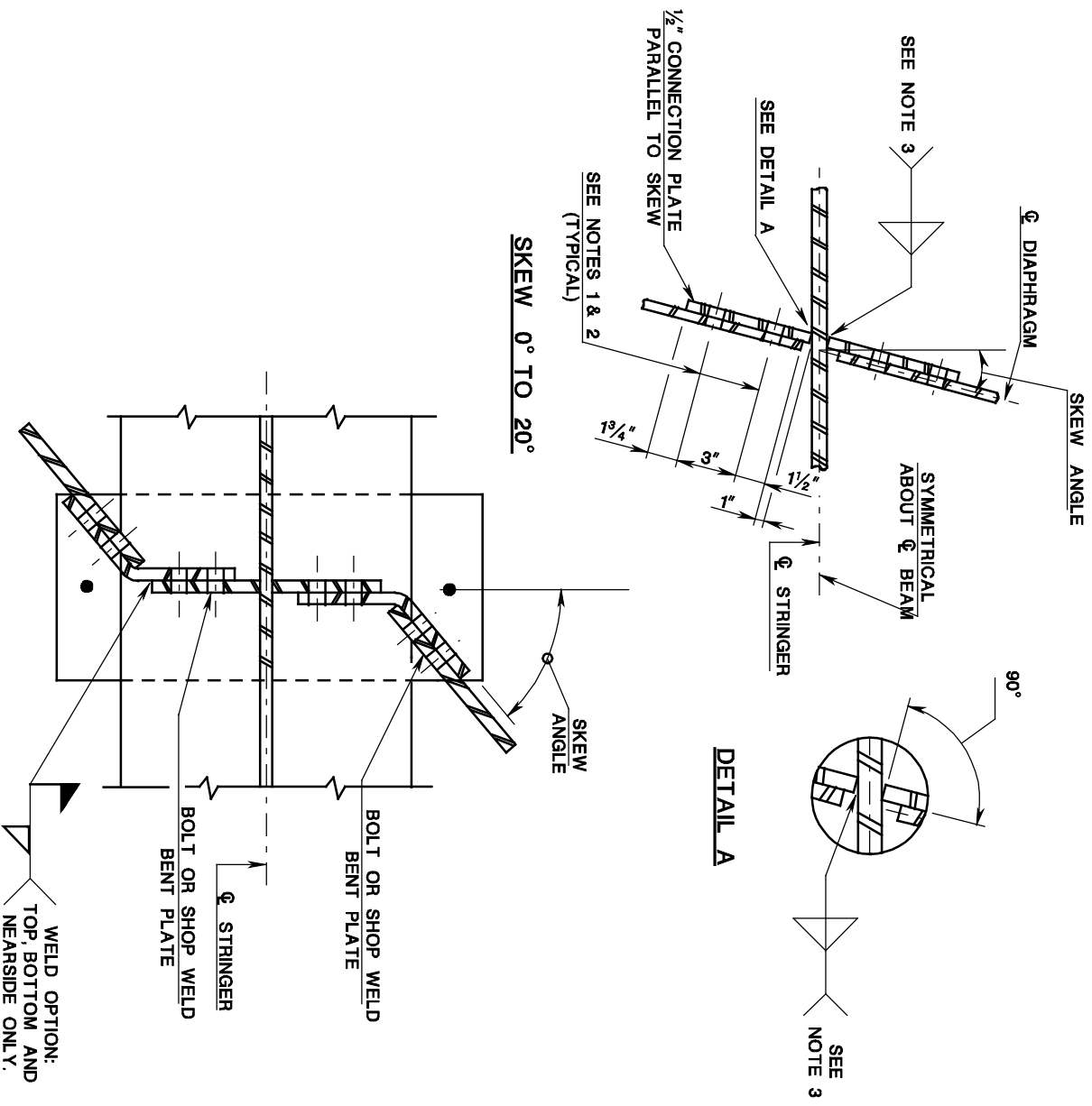


# CROSSFRAME DETAILS (SHEET 2 OF 2) CONNECTION PLATE FOR STRINGER

ISSUED: 2009

PLATE  
3.9-15



## NOTES:

### SKEWS GREATER THAN 20°

1. 1 1/8" DIAMETER HOLE IN CONNECTION PLATE; 5/16" DIAMETER HOLE IN CONNECTING MEMBER FOR 7/8" DIAMETER ASTM A325 BOLTS STD. SIZE HOLES ARE PERMITTED.
2. USE 7/8" DIAMETER ASTM A325 BOLTS HAVING AN UNTHREADED SHANK OF SUFFICIENT LENGTH TO NOT ALLOW ANY THREADS TO EXIST IN THE PLANE BETWEEN THE TWO CONNECTED PARTS (SHEAR PLANE).
3. WELD SIZE MUST BE IN ACCORDANCE WITH AWS D1.5, SECTION 2.
4. POSITION DIAPHRAGM CONNECTION COMPONENTS SO AS TO CREATE MINIMUM OFFSET FROM CENTER LINE OF BEARINGS. DIAPHRAGM CONNECTION PLATE MAY BE PLACED BEHIND THE BEARING STIFFENER TO MINIMIZE OFFSET.